



6250-TC

300-M ton Truck Crane



BARKAT HIRING CO.™

CRANE, FORK-LIFT & TRAILOR OWNERS



11/12/13, Shroff Bhuvan, 1st Floor, 159, P. D'Mello Road, Carnac Bunder, Mumbai - 400 001
Phone : +91 22 2261 3009 / 2262 1448 / 2261 3870 Fax : 2261 5990
E-mail : barkat@bom5.vsnl.net.in • barkat@mtnl.net.in Website : www.barkatworld.com

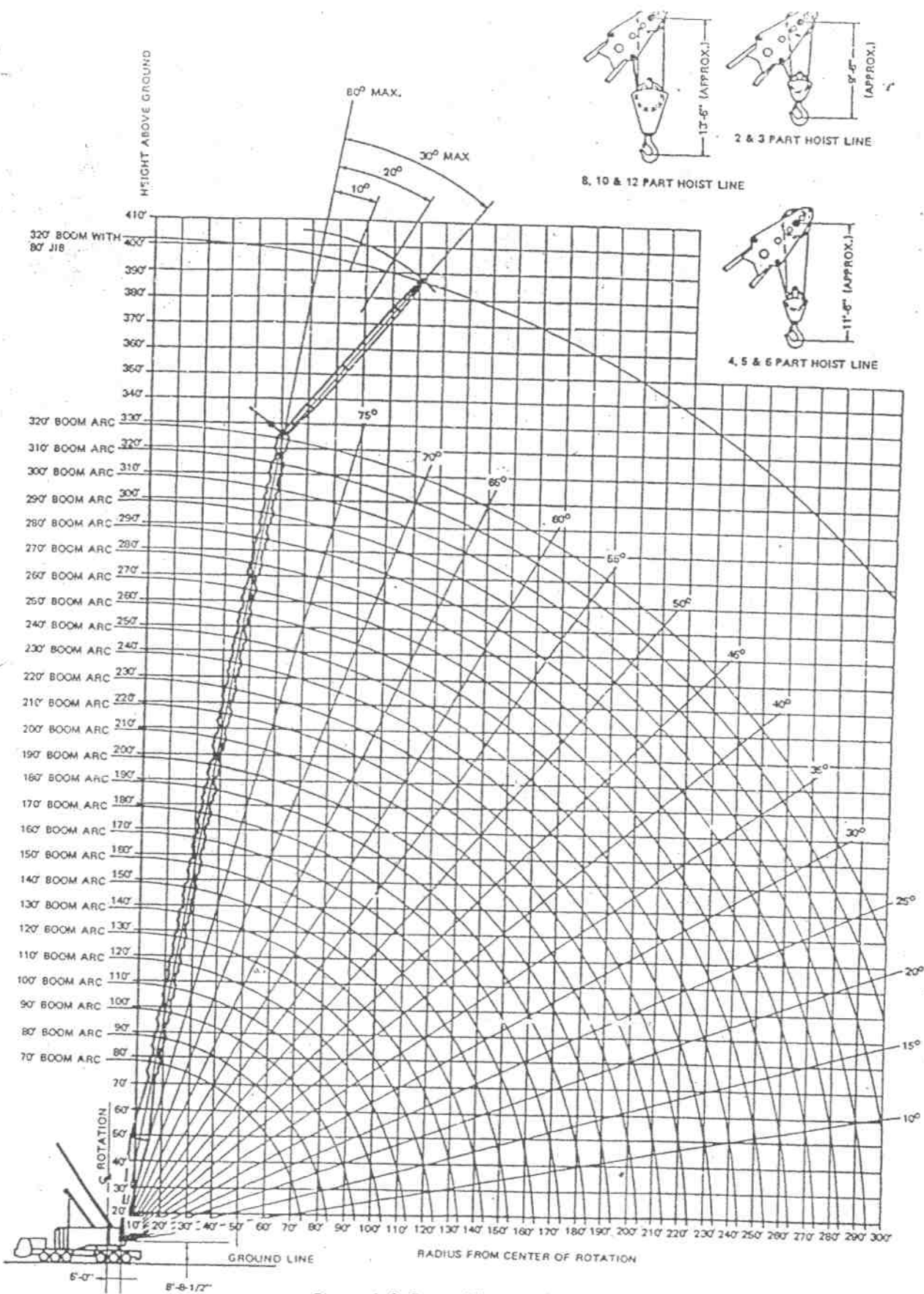


Figure 1-6. Range Diagram (105J641)

P&H 6250, 250 TON TRUCK CRANE PCSA CLASS. 18 - 1682

RATING IN POUNDS 90000 POUNDS COUNTERWEIGHT

OPER. RAO. FT.	60 FT. BOOM		70 FT. BOOM		80 FT. BOOM		90 FT. BOOM		100 FT. BOOM		110 FT. BOOM		120 FT. BOOM		130 FT. BOOM		140 FT. BOOM		150 FT. BOOM		160 FT. BOOM				
	BOOM PT. EL.	RATING LBS.	BOOM PT. EL.	RATING LBS.	BOOM PT. EL.	RATING LBS.	BOOM PT. EL.	RATING LBS.	BOOM PT. EL.	RATING LBS.	BOOM PT. EL.	RATING LBS.	BOOM PT. EL.	RATING LBS.	BOOM PT. EL.	RATING LBS.	BOOM PT. EL.	RATING LBS.	BOOM PT. EL.	RATING LBS.	BOOM PT. EL.	RATING LBS.			
18	81	500000	79	500000																					
20	78	456000	78	455000																					
25	74	361000	77	360000	76	359000	77	359200																	
30	68	265500	69	264700	72	264700	74	264600	107	264600	77	117	264300												
35	63	207000	65	212700	68	212000	71	212000	73	211500	74	116	211000	77	136.5	209900	78	147	209800	78	157	209300			
40	57	168200	60	171300	64	172900	67	172500	70	172000	71	114.5	171400	73	125	170800	74	135.5	170300	76	145.5	170100	77	156	169500
45	51	141100	55	145900	60	145500	64	144900	66	144400	69	112.5	143800	71	123.5	143200	72	134	142600	73	144.5	142400	75	154.5	141900
50	45	121200	50	125700	56	125200	60	124700	63	124200	66	110.5	123500	68	121.5	122900	70	132	122200	71	142.5	122000	73	153	121500
60	27	94000	38	98000	47	97400	52	96800	57	96200	60	105.5	95600	63	117	94900	65	128	94200	67	139	94000	68	149.5	93400
80																									
90																									
100																									
110																									
120																									
130																									
140																									
150																									
160																									

PARTS OF LINE	MAX. LOAD LBS.					
	1	2	3	4	5	6
MAIN HOIST REEVING	47700	83400	128000	186700	208400	208400
P&H TYPE 25 WIRE ROPE 1 1/4 IN. DIA.						
6	7	8	9	10	11	12
250000	291800	333400	376000	416700	458400	500000

P&H SINGLE SHEAVE BLOCK	2400 LBS.
P&H SINGLE SHEAVE BLOCK	3100 LBS.
P&H SIX SHEAVE BLOCK	6700 LBS.

BOOM UPPER SECTION	LOAD RATING DEDUCT *	MAX. BOOM LENGTH	MAX. RATING	MAST REQ'D	INTERMEDIATE SUSPENSION
3 SHEAVE TIP (30 FOOT)	Q I.B.	320 FT.	250000 LBS.	250 FT. AND OVER	250 FT. AND OVER
HEAVYDUTY 6 SHEAVE TIP (30 FOOT)	1500 LBS.	240 FT.	500000 LBS.	NOT REQ'D.	NOT REQ'D.
HAMMERHEAD 6 SHEAVE TIP (20 FOOT)	3000 LBS.	200 FT.	500000 LBS.	NOT REQ'D.	NOT REQ'D.

NOTE: SEE JIB RATING PLATE FOR MAIN BOOM LOAD RATING DEDUCT WHEN JIB IS MOUNTED.

P & H 6250, 250 TON TRUCK CRANE PCSA CLASS 18 - 1682

RATING IN POUNDS 90000 POUNDS COUNTERWEIGHT

CARRIER CLASS FT.	170 FT. BOOM		180 FT. BOOM		190 FT. BOOM		200 FT. BOOM		210 FT. BOOM		220 FT. BOOM		230 FT. BOOM		240 FT. BOOM		250 FT. BOOM		260 FT. BOOM		270 FT. BOOM		280 FT. BOOM		290 FT. BOOM		300 FT. BOOM		310 FT. BOOM		320 FT. BOOM		OPER. RAD. FT.		
	ANGLE	ROOM FT. EL.	ANGLE	ROOM FT. EL.	ANGLE	ROOM FT. EL.	ANGLE	ROOM FT. EL.	ANGLE	ROOM FT. EL.	ANGLE	ROOM FT. EL.	ANGLE	ROOM FT. EL.	ANGLE	ROOM FT. EL.	ANGLE	ROOM FT. EL.	ANGLE	ROOM FT. EL.	ANGLE	ROOM FT. EL.	ANGLE	ROOM FT. EL.	ANGLE	ROOM FT. EL.	ANGLE	ROOM FT. EL.	ANGLE	ROOM FT. EL.					
40	76	176.5	169920	79	182.5	168400																												40	
45	76	175.5	161200	77	185.5	160900	78	190	142600	78	190	142600																							45
50	75	174	150700	76	181.5	150200	77	186.5	149700	77	186.5	149700																							50
60	71	171	126500	72	181.5	126000	73	192	125500	74	192	125500																							60
70	66	167	102300	69	170	101800	71	180.5	101300	71	180.5	101300																							70
80	64	162.5	81300	65	174	80800	68	184.5	80300	68	184.5	80300																							80
90	60	157.5	61700	62	169	61200	63	180	60700	63	180	60700																							90
100	56	151	44300	58	163	43800	60	174.5	43300	60	174.5	43300																							100
110	52	144	34800	54	155.5	34300	56	168.5	33800	56	168.5	33800																							110
120	47	135.5	35600	50	148	35100	53	161.5	34600	53	161.5	34600																							120
130	43	126.5	29700	46	139.5	29200	49	153	28700	51	166.5	28200																							130
140	37	110.5	29500	41	129	29000	45	144	28500	48	157.5	28000																							140
150	31	98.5	23700	36	116.5	23200	40	133	22700	44	146	22200																							150
160	24	79.5	21400	31	101.5	20900	35	120	20400	39	136.5	19900																							160
170	14	50.5	19100	24	81.5	18600	30	104	18100	34	123	17600																							170
180				14	51.5	18600	23	83.5	18100	29	106.5	17600																							180
190							13	53	18100	22	86	17600																							190
200										13	54	17600																							200
210																																			210
220																																			220
230																																			230
240																																			240
250																																			250
260																																			260
270																																			270

CAUTION: TO ROTATE UPPER WITH COUNTERWEIGHTS ATTACHED, MACHINE MUST BE SECURED TO THE CARRIER REAR. LOADS OVER 240FT. MUST BE EFFECTED OVER CARRIER REAR.

NOTE: OPERATION OF THIS EQUIPMENT IN EXCESS OF RATED LOADS AND DISREGARD OF INSTRUCTIONS VOID THE WARRANTY.



HARNISCHFEGER

SEE NOTE B & C

SEE NOTE B & D

STANDARD CRANE RATINGS OVER REAR

NOTES:

1. RATINGS ABOVE HEAVY LINE ARE GOVERNED BY FACTORS OTHER THAN STABILITY.
2. RATINGS AT 40 FT. OPERATING RADIUS, OR LESS, ARE FOR THE HEAVY DUTY SIX SHEAVE TIP SECTION THRU 160 FT. BOOM; AND EITHER LIGHT OR HEAVY TIP FOR 170 FT. BOOM THRU 190 FT. BOOM.
3. RATINGS AT 45 FT. OPERATING RADIUS, OR GREATER, ARE BASED ON THE LIGHT DUTY THREE SHEAVE TIP SECTION. DEDUCT 1,500 POUNDS WHEN USING HEAVY DUTY SIX SHEAVE TIP SECTION.
6. SEE CHART 32R208 FOR APPROVED WORK AREA.

Oper. Rad. Ft.	160 FT. BOOM		170 FT. BOOM		180 FT. BOOM		190 FT. BOOM		200 FT. BOOM		210 FT. BOOM		220 FT. BOOM		230 FT. BOOM		240 FT. BOOM		Oper. Rad. Ft.			
	Boom Pt. El.	Rating Lbs.	Boom Pt. El.	Rating Lbs.	Boom Pt. El.	Rating Lbs.	Boom Pt. El.	Rating Lbs.	Boom Pt. El.	Rating Lbs.	Boom Pt. El.	Rating Lbs.	Boom Pt. El.	Rating Lbs.	Boom Pt. El.	Rating Lbs.	Boom Pt. El.	Rating Lbs.				
35	79	168	269700																35			
40	77	167	243200	78	177	238700	79	186	219200	79	197	213800							40			
45	76	166	220400	76	176	220200	77	187	212200	78	197	204900	78	207	195800	79	216	178700	45			
50	74	164	186100	75	175	185800	76	185	185400	76	195	185000	77	205	182200	78	216	172600	50			
60	70	161	140600	71	171	140400	72	182	139900	73	193	139500	74	203	139300	75	213	138800	50			
70	66	157	112200	68	168	112000	69	179	111500	70	189	111000	71	200	110800	72	210	110400	70			
80	62	152	92300	64	164	92200	65	174	91600	67	185	91100	68	196	90900	69	207	90400	80			
90	58	146	78300	60	158	78200	62	170	77600	63	181	77100	65	192	76900	66	203	76400	90			
100	54	140	67300	56	152	67100	58	164	66600	60	176	66100	62	187	65800	63	192	65300	100			
110	49	132	58600	52	145	58500	54	157	57900	56	169	57400	58	181	57100	60	193	56600	110			
120	44	122	51800	47	136	51500	50	150	50800	53	162	50300	55	175	50100	57	187	49500	120			
130	39	126	45700	43	126	45700	46	140	45100	49	154	44600	51	167	44300	54	180	43700	130			
140	33	99	41700	38	116	41100	42	131	41100	45	146	40700	48	160	40500	50	173	39900	140			
150	26	81	37600	32	102	37500	37	119	36900	41	135	36500	44	150	36200	47	164	35700	150			
160	16	55	33500	25	83	33900	31	104	33300	36	123	32800	40	138	32600	43	154	32000	160			
170				16	56	30700	24	86	30100	30	107	29700	35	126	29400	39	142	28900	170			
180							15	58	27300	24	88	26900	30	110	26700	34	125	26100	180			
190										15	59	24400	23	90	24200	29	112	23600	190			
200													14	60	22000	23	92	21400	200			
210																14	61	19500	210			
220																	14	63	17500	220		
230																		13	64	15300	230	
240																			13	65	13400	240

STANDARD CRANE RATINGS OVER REAR

NOTES:

1. RATINGS ABOVE HEAVY LINE ARE GOVERNED BY FACTORS OTHER THAN STABILITY.
4. RATINGS SHOWN ARE FOR LIGHT DUTY THREE SHEAVE TIP ONLY AND REQUIRES INTERMEDIATE SUSPENSION.
6. SEE CHART 32R208 FOR APPROVED WORK AREA.

Oper. Rad. Ft.	250 FT. BOOM		260 FT. BOOM		270 FT. BOOM		280 FT. BOOM		290 FT. BOOM		300 FT. BOOM		310 FT. BOOM		320 FT. BOOM			
	Boom Pt. El.	Rating Lbs.	Boom Pt. El.	Rating Lbs.	Boom Pt. El.	Rating Lbs.	Boom Pt. El.	Rating Lbs.	Boom Pt. El.	Rating Lbs.	Boom Pt. El.	Rating Lbs.	Boom Pt. El.	Rating Lbs.	Boom Pt. El.	Rating Lbs.		
60	77	255	132700	78	264	128100	78	275	114200	79	285	104700	79	295	96500	79	306	89000
70	75	252	108800	76	262	108300	76	273	107900	77	283	102500	77	293	94400	78	304	83750
80	72	249	88700	73	260	88200	74	270	87800	74	281	87000	75	281	86700	76	301	81600
90	70	246	74800	71	257	74300	72	267	73900	72	278	73200	73	288	72800	74	298	72300
100	68	242	63700	69	253	63100	69	264	62800	70	274	62000	71	284	61600	72	295	61100
110	65	238	54900	65	248	54300	67	260	54000	68	270	53200	69	281	52800	70	292	52300
120	63	233	47800	64	244	47300	65	255	46900	66	266	46100	67	277	45700	68	288	45100
130	60	228	42000	62	240	41600	63	251	40800	64	262	40500	65	273	40500	66	284	40400
140	58	222	38300	59	234	37800	60	246	37400	62	257	36600	62	268	36300	64	280	35700
150	55	216	34100	56	228	33500	58	240	33200	59	251	32300	60	263	32000	61	274	31400
160	52	208	30400	54	221	29800	55	233	29500	57	245	28700	58	257	28300	59	269	27700
170	49	200	27200	51	213	26600	53	226	26300	54	238	25500	56	250	25100	57	262	24600
180	46	191	24400	48	204	23900	50	218	23600	52	231	22700	53	243	22500	55	256	21700
190	43	180	22000	45	196	21400	47	209	21100	49	222	20200	51	235	19900	52	248	19300
200	39	169	19800	42	184	19700	44	199	19300	46	213	18000	48	227	17700	50	240	17100
210	35	156	17800	38	172	17200	41	188	16900	43	203	16100	45	217	15700	47	231	15100
220	31	140	16100	35	159	15500	38	176	15200	40	192	14300	42	207	13900	45	222	13300
230	26	122	14500	31	143	13900	34	162	13600	37	179	12700	40	196	12300	42	211	11700
240	21	99	13000	26	125	12400	30	146	12100	33	165	11300	36	183	10800	39	199	10300
250	13	66	11700	20	101	11100	26	127	10800	30	149	9850	33	168	9550	36	186	8950
260				13	67	8900	20	103	9600	25	129	8700	29	151	8350	32	170	7700
270							12	68	8500	20	105	7600	25	131	7250	28	154	6600
280									12	69	6600	19	106	6200	24	134	5550	
290											12	70	5300					

STANDARD CRANE RATINGS OVER REAR

NOTES:

- 1. RATINGS ABOVE HEAVY LINE ARE GOVERNED BY FACTORS OTHER THAN STABILITY.
- 4. RATINGS SHOWN ARE FOR LIGHT DUTY THREE SHEAVE TIP ONLY AND REQUIRES INTERMEDIATE SUSPENSION.
- 6. SEE CHART 32R208 FOR APPROVED WORK AREA.

Oper. Rad. Ft.	250 FT. BOOM			260 FT. BOOM			270 FT. BOOM			280 FT. BOOM			285 FT. BOOM			300 FT. BOOM			310 FT. BOOM			320 FT. BOOM			Oper. Rad. Ft.
	Boom Pt. El.	Rating Lbs.	$\frac{D}{C}$	Boom Pt. El.	Rating Lbs.	$\frac{D}{C}$	Boom Pt. El.	Rating Lbs.	$\frac{D}{C}$	Boom Pt. El.	Rating Lbs.	$\frac{D}{C}$	Boom Pt. El.	Rating Lbs.	$\frac{D}{C}$	Boom Pt. El.	Rating Lbs.	$\frac{D}{C}$	Boom Pt. El.	Rating Lbs.	$\frac{D}{C}$	Boom Pt. El.	Rating Lbs.	$\frac{D}{C}$	
60	77	255	132700	78	264	128100	78	275	114200	79	285	104700	79	295	96500	79	306	85900							60
70	75	252	108800	76	262	103300	76	273	107900	77	283	102500	77	293	94400	78	304	83750	78	314	77200	78	324	58100	70
80	72	249	88700	73	260	88200	74	270	87800	74	281	87000	75	291	86700	76	301	81600	76	312	75300	76	322	67200	80
90	70	246	74800	71	257	74300	72	267	73900	72	278	73200	73	288	72800	74	298	72300	74	309	71900	75	319	66400	90
100	68	242	63700	69	253	63100	69	264	62800	70	274	62000	71	284	61600	72	295	61100	72	306	60700	73	316	60200	100
110	65	238	54900	65	249	54300	67	260	54000	68	270	53200	69	281	52800	70	292	52300	70	302	51800	71	313	51400	110
120	63	233	47800	64	244	47300	65	255	46900	66	266	46100	67	277	45700	68	288	45100	68	299	44700	69	310	44200	120
130	60	228	42000	62	240	40600	63	251	40600	64	262	40500	65	273	40500	66	284	40400	66	295	40400	67	306	38900	130
140	56	222	38300	59	234	37800	60	246	37400	62	257	36600	62	268	36300	64	280	35700	64	291	35300	65	302	34800	140
150	55	218	34100	55	228	33500	58	240	33200	59	251	32300	60	263	32000	61	274	31400	62	286	31000	63	297	30500	150
160	52	208	30400	54	221	29800	55	233	29500	57	245	28700	58	257	28300	59	269	27700	60	280	27400	61	292	26900	160
170	48	200	27200	51	213	26600	53	226	26300	54	238	25500	56	250	25100	57	262	24600	58	274	24200	59	286	23700	170
180	46	191	24400	48	204	23900	50	218	23600	52	231	22700	53	243	22300	55	256	21700	56	268	21300	57	280	20900	180
180	43	180	22000	45	195	21400	47	209	21100	49	222	20200	51	235	19800	52	248	19300	54	261	18500	55	273	18400	190
200	39	169	19800	42	184	19200	44	199	18900	46	213	18000	48	227	17700	50	240	17100	51	253	16700	53	266	16200	200
210	35	156	17800	38	172	17200	41	188	16900	43	203	16100	45	217	15700	47	231	15100	49	245	14700	50	258	14200	210
220	31	140	16100	35	159	15500	38	176	15200	40	192	14300	42	207	13900	45	222	13300	46	236	12500	48	249	12400	220
230	26	122	14500	31	143	13900	34	162	13600	37	179	12700	40	196	12300	42	211	11700	44	226	11300	46	240	10800	230
240	21	99	13000	26	125	12400	30	146	12100	33	165	11300	36	183	10800	39	199	10300	41	215	9850	43	230	9350	240
250	13	66	11700	20	101	11100	26	127	10800	30	149	9950	33	168	9550	36	186	8950	38	202	8500	40	218	8000	250
260				13	67	8900	20	103	9600	25	126	8700	29	151	8350	32	170	7700	35	189	7500	38	206	6800	260
270							12	68	8500	20	105	7600	25	131	7250	28	154	6600	32	174	6200	34	192	5650	270
280											12	69	6600	19	106	6200	24	134	5550	28	155	5150			280
290												12	70	5300											290

32R209

STANDARD

OPERATING RADIUS IS A HORIZONTAL DISTANCE FROM CENTERLINE OF ROTATION TO A VERTICAL LINE THROUGH THE CENTER OF GRAVITY OF THE LOAD.

RATINGS SHOWN ARE FOR UNIT MOUNTED ON A P & H TRUCK CARRIER AND EQUIPPED WITH PROPER P & H BOOM AND COUNTERWEIGHT. RATINGS ARE BASED ON ALL OUTRIGGERS IN A FULLY EXTENDED POSITION AND INCLUDE WEIGHT OF HOOK, BLOCK, SLINGS AND ALL OTHER LOAD HANDLING ACCESSORIES, AND DO NOT EXCEED 85% OF TIPPING LOAD. BOOM BACKSTOPS ARE RECOMMENDED FOR ALL BOOM LENGTHS. RATINGS APPLY TO FULL 360° OPERATION WHEN FRONT FLOAT IS IN PLACE, OTHERWISE ONLY OVERSIDES AND REAR.

LOAD RATING SHOWN ON THIS CHART MAKE NO ALLOWANCES FOR SUCH FACTORS AS THE EFFECT OF FREELY SUSPENDED LOADS, WIND, GROUND CONDITIONS, INFLATION OF RUBBER TIRES AND OPERATING SPEEDS. THE OPERATOR THEREFORE SHALL REDUCE LOAD RATING IN ORDER TO TAKE THESE CONDITIONS INTO ACCOUNT.

AREAS ON PLATE WHERE NO RATINGS ARE SHOWN, OPERATION IS NOT INTENDED OR APPROVED. GANTRY MUST BE IN FULLY RAISED POSITION EXCEPT WHEN USING MAST. INSERT ARRANGEMENT AS SHOWN IN CARE AND OPERATION MANUAL.

THE FOLLOWING NOTES MUST BE COMPLIED WITH WHEN OPERATING IN THE SPECIFIED AREAS OF THE RATING PLATE, BOUNDED BY THE HEAVY LINES:

- A) RATINGS SHOWN REQUIRE EITHER A HAMMERHEAD TIP (20 FT.) OR A HEAVY DUTY TIP (30 FT.). LOAD RATING DEDUCT INCLUDED.
- B) RATINGS SHOWN ARE BASED ON STRENGTH OF MATERIALS.
- C) RATINGS SHOWN REQUIRE A LIGHT DUTY TIP (30 FT.) APPROPRIATE DEDUCTS MUST BE USED FOR OTHER TIP SECTIONS (SEE CHART).
- D) RATINGS SHOWN REQUIRE MAST, INTERMEDIATE SUSPENSION AND REAR AUXILIARY FLOATS.